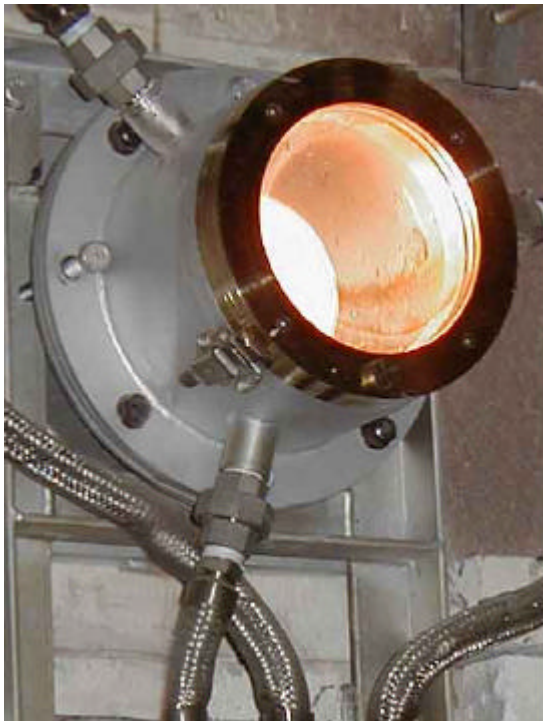
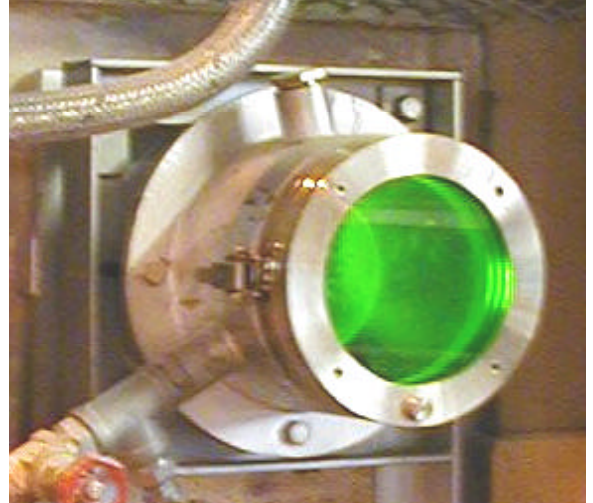


Sealed Spy Hole Covers

- Uses fan air usually available from existing sources such as flux line or skewback cooling. Can use oxygen as a cooling medium if required.
- Typical air cooling supply is 25m³/hr @ 8 mbar, depending on furnace conditions.
- Lens assemblies can be easily removed for cleaning etc.
- Used on all types of glass furnace, including gas fired, oil fired and oxy-fuel.
- Used on container, tubing, TV, fibre glass furnaces amongst others.
- Can be installed on new or existing 'hot' furnaces and flues.



- Support brackets can be designed by our engineers to suit local furnace steelwork.
- Options of clear or green tinted lenses, standard window size is Ø160mm other sizes available upon request.
- Reduced health & safety risks for operators.
- Better operator viewing comfort by removing 'sting out'.
- Reduction in flue gas emissions due to sealed spy holes preventing egress of external air.